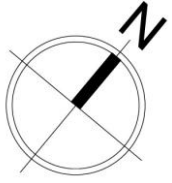
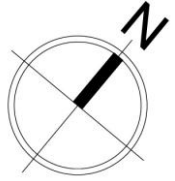
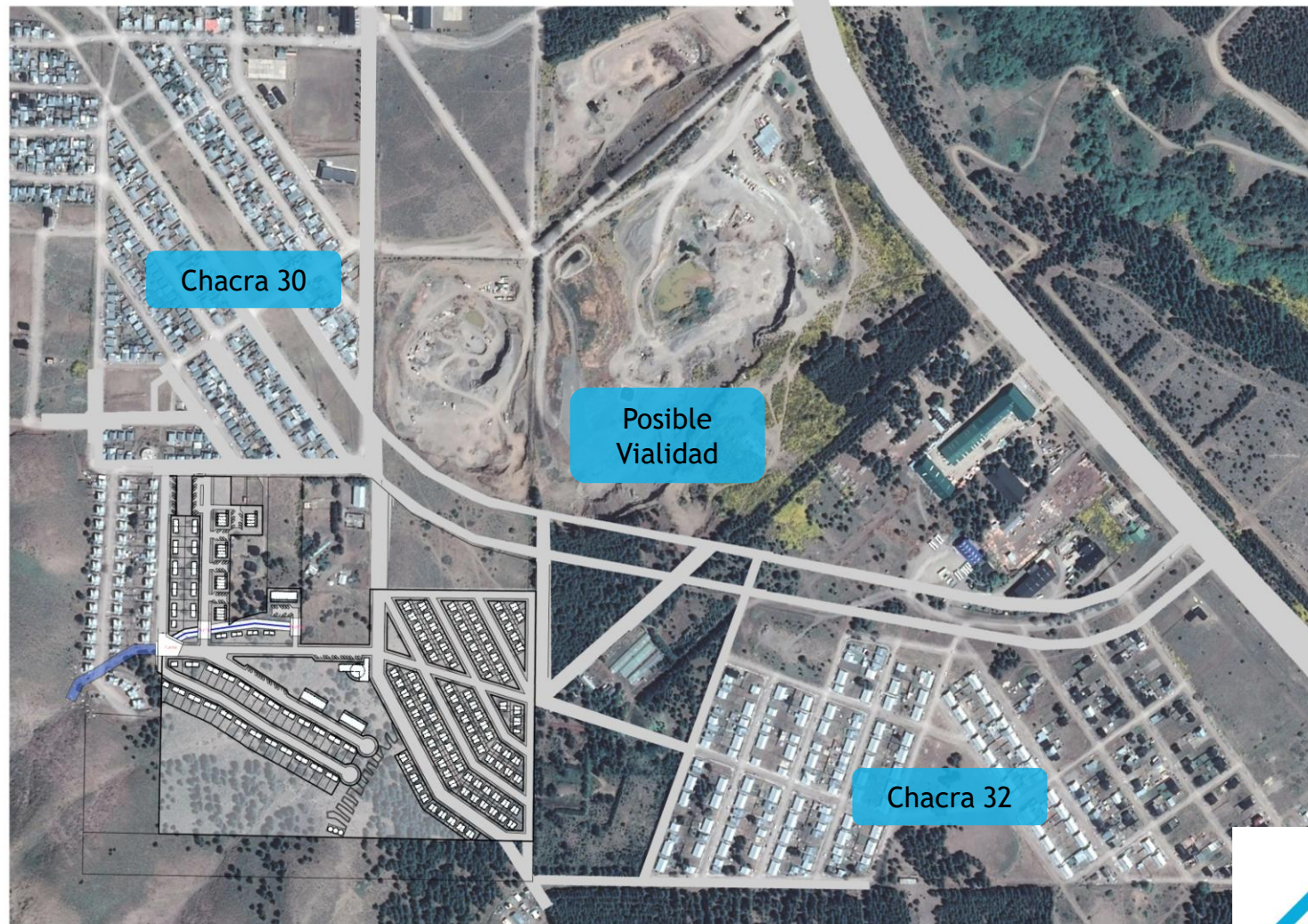


UBICACIÓN 12.5 Ha

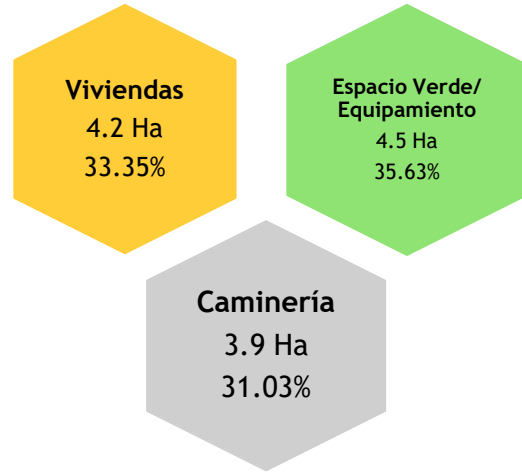




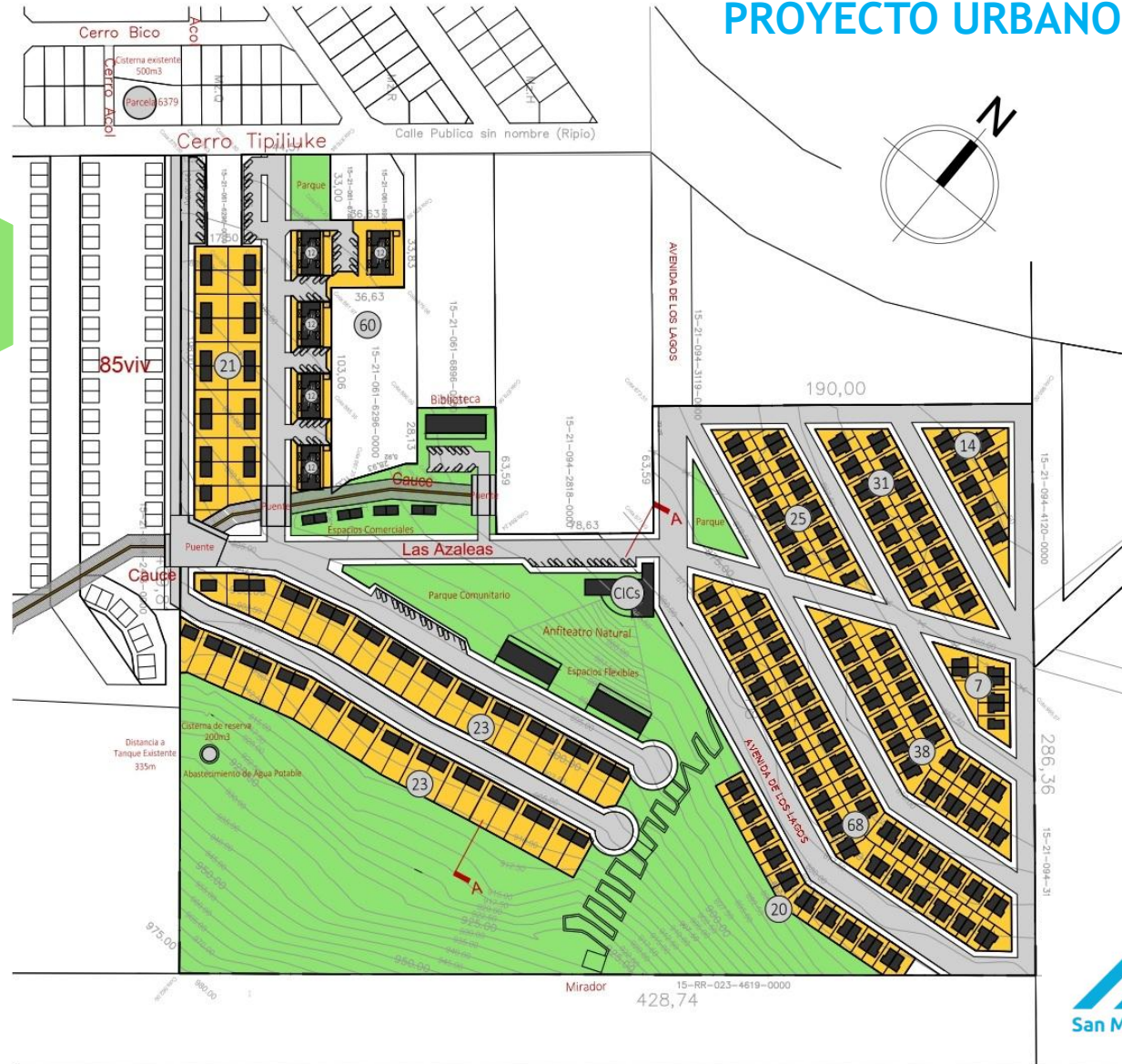
PROPUESTA IMPLANTACIÓN



USO DEL SUELO



PROYECTO URBANO



Referencias	Ha	%
12.5Ha	12.5	100
Espacio Verde / Equipamiento	4.5	35.63
Caminería	3.9	31.03
Viviendas	4.2	33.35

Viv. hasta 2 Habitantes	60
Viv. hasta 4 Habitantes	203
Viv. mayor a 4 Habitantes	67
Viviendas totales	330